

From Our Files

Never absent never late in 9 years girl gets medal

1900 OPENING of a new garrison church at Sandgate, another addition to the "Great Wesleyan extension scheme," was among stories grabbing the local headlines a century ago. Described as a very handsome structure the church was built close to the J.B. Gough Soldiers' Home and the President of the National Council of Evangelical Free Churches came down to open it. Our man Felix was urging the Hythe Bus Company to pull its socks up. It needed to consider the public more, he wrote, and open a Folkestone office to improve its service in such directions as carrying packages between the two towns. He also wrote of another occasion when it was raining and passengers waiting for a bus were dismayed by the sight of a series of open charabancs approaching - since they didn't have umbrellas! A Folkestone Herald scribe wrote enthusiastically about a magnificent panoramic view of Folkestone recently taken by Guildhall Street photographer Mr Burgess, saying how vividly it recorded the far-reaching changes that had taken place in the town compared with a another picture of around 1860 displayed alongside it.

New theatre at Sandgate

5/4/45

FOLKESTONE-Hythe Operatic and Dramatic Society is going ahead with its plans for converting the Congregational Church at Sandgate into a new theatre. We need considerable additions to our finances before we can complete the project.

The society wishes me to thank all those members and patrons of the society, and particularly others who have no connection with the society, who have most generously given donations to the New Club Theatre Fund.

Donations have been received up to the end of May from the following:

Mr. L. C. Aldridge, F. A. Bateman Ltd., Mrs. R. Bellew, Blind Club of Folkestone, Boxall of Hythe Ltd., Channel Woodcraft Ltd., Mrs. H. Colyer, Major and Mrs. J. F. Elliot, Mr. R. Gibbs, Mrs. D. Gilbert, Sister E. R. Holland, Miss A. B. Kendall, Miss V. M. Leeds, Lyndhurst Hotel, Miss F. R. Levy, Miss P. McDouall, Marks and Spencer Ltd., Mr. and Mrs. J. W. Marston, Mr. G. R. Mills, Walter Moncrieff, Mr. F. Shaw, Mrs. D. Summerfield, Brig. and Mrs. G. P. Thomas, Miss W. Tolputt, Mrs. M. Whitehead, Miss D. Wright.—G. P. Thomas, hon. secretary, The Mead Cottage, Acrise.

Herald 24/4/65

Church will be theatre by October

THE five-month task of converting the former Sandgate Congregational Church into a theatre started this week.

Folkestone - Hythe Operatic and Dramatic Society have acquired a 21-year lease on the building.

The conversion will cost them £3,500.

They hope to stage the first production there in October.

The theatre will seat up to 95 and a moveable stage will enable theatre-in-the-round and other types of productions to be presented.

A dressing room, wardrobe and refreshments room are included in the scheme.

The society's big worry at the moment is financing the project.

Bombed

So far they have little more than a third of the required amount.

"We will welcome any offers of financial assistance," said the chairman of the planning committee, Mr. Cyril Griggs.

The society's lease on the Little Theatre at Folkestone is being allowed to lapse, and the premises will be closed at the end of June.

Sandgate Congregational Church closed last June, when the average congregation had dropped to eight.

The church had been without a minister then for 11 years.

During the last war the church was hit by a flying bomb, and it was the damage caused by this bomb which led it to be known locally as the church with the leaning tower.

The tower was tilted for many years, finally became unsafe and was demolished.



27 YEARS

An artist's impression of how the church will look after conversion into a theatre.

Friday 5th July 1985

Pastures new . . .



FAREWELL: For Rev Schofield and his wife Jo at their party

Edward says farewell

THERE was quite a party for the Rev Edward Schofield when he retired as Vicar of Sandgate on Sunday. Mr Schofield and his wife Jo, who have been resident in the vicarage of St Paul's at Sandgate Hill for the last eight years, are moving on to pastures new and retirement in Worcestershire.


The surprise party was organised by parishioners and held in the church hall where refreshments were served and the couple were presented with cards, a figurine and a cheque for £1,000.

Churchwarden Charles Phillips told the Herald: "The couple are very popular and very highly regarded. We're all very sad we're losing them."

Mr Schofield said he had immensely enjoyed his time in Sandgate and would be sad to leave.

"The party was wonderful — we really enjoyed it," he said.

MOTTO FOR 1892.



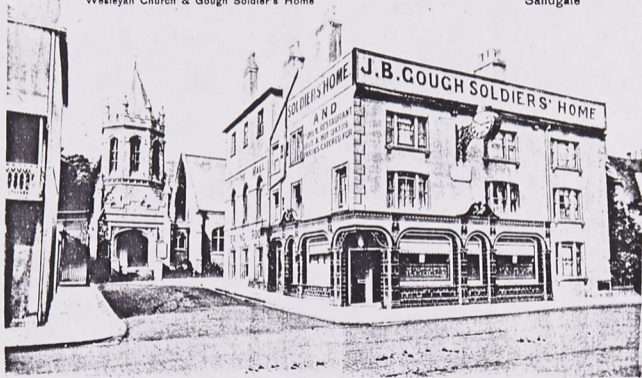
BY LOVE SERVE
ONE ANOTHER.

Galatians v. 13.

... Sandgate ...
Congregational Sunday School

Wesleyan Church & Gough Soldier's Home

Sandgate



*Gough Home
and
Church*

The Sandgate & Seabrook Monthly Messenger

Published in connection with the Congregational Church, Sandgate.

No. 15.

FEBRUARY, 1929.

Minister : Rev. J. HALLETT. Treasurer and Secretary : Mr. E. JOHNSON. Organist : Miss HALLETT.
Sunday School Superintendent : Mr. R. N. REYNOLDS. Sunday School Secretary : Mr. E. HUNTABLE.
Treasurer Organ Fund : Mr. R. N. REYNOLDS.

Sunday Services.

11 a.m. Divine Worship. 2.45 p.m. Sunday School.
2.45 p.m. Senior Boys' Bible Class. 6 p.m. Prayer.
6.30 p.m. Divine Worship.
Holy Communion every first Sunday in each month after Evening Service.
Special Service for the People every third Sunday in each month at 6.30.

Week-Days.

Tuesday, 6 p.m. Band of Hope
7.30 p.m. P.T.E. 8 p.m. Choir Practice.
Wednesday, Senior Boys' Club at 6 p.m.
Thursday, "Women's Social Hour" at 2.30 p.m.
Thursday, Girls' Busy Bee Society at 7 p.m.
at 7.45 p.m.
Friday, Junior Boys' Club at 5 p.m.

Motto for February—Unity, Equality, Fraternity.



SANDGATE.

Why go to the Continent when you can come to Sandgate ?

Suitable accommodation always available.

Information may be had of the Editor.

SANDGATE.

This neighbourhood is one of the mildest and most health-giving resorts in England.

NOTICE ! CHICHESTER HALL.

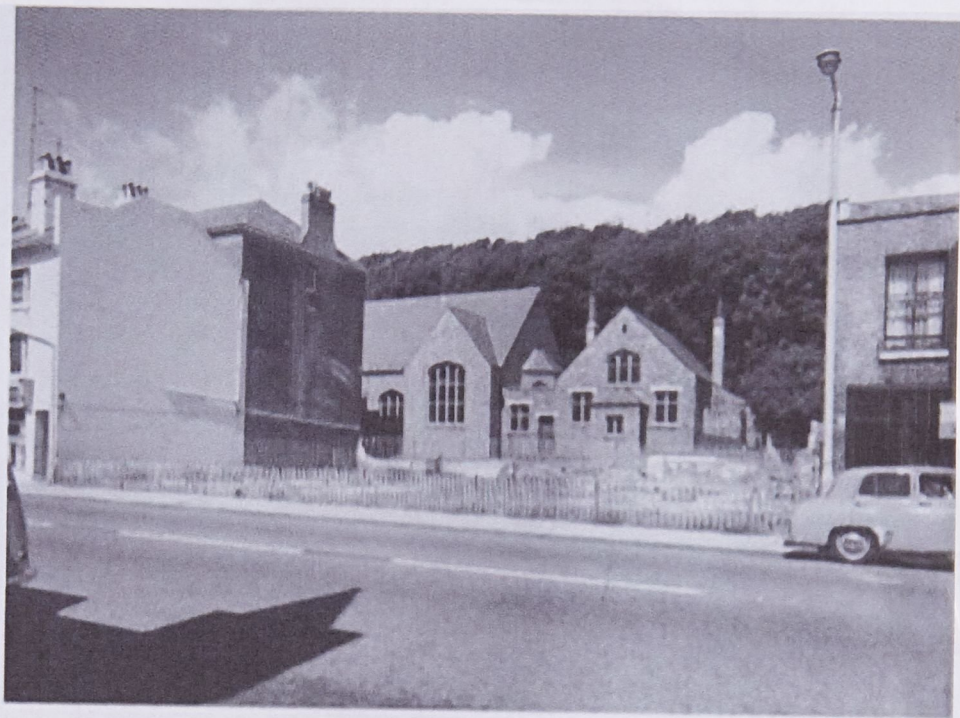
By special request, a Lecture will be given this Wednesday evening, January 30th, at 7.30, entitled : Old Sandgate (past and present)—Sir John Moore—Storms—Landslips—Shipwrecks—Smuggling Days—and other local items. Illustrated by 60 slides shown by Electrical Lantern. The Lecture (arranged by Mr. R. N. Reynolds from the late Col. R. J. Fynmore's Reminiscences) will be given by A. H. Ulyett, Esq., F.R.G.S. The Chair will be taken by Major R. P. Norman, J.P. Tickets 6d. each, to be obtained of Mr. R. N. Reynolds, 121, High Street, Sandgate. Get your ticket at once, and come in crowds. It is worth your while to see it and hear about it. It is full of heroic deeds, and stirring adventure of worthy townsmen and women who have "Crossed the Bar." We heard a man say, after hearing it :—"I never thought that Sandgate was so interesting."

A Message for February.

"God created man in his own Image . . . Male and female created He them. And God blessed them, and God said unto them, be fruitful and multiply, and replenish the earth . . . and have dominion over every living thing that moveth upon the earth. And God saw everything He had made, and behold it was very good." By this we see that there has been, and is, one great Predominating Power and Presence in the Universe, and that is the power and presence of Jehovah. "It is His presence that goeth before you to make the way plain for your feet. It is He that goeth with thee; He will not fail thee nor forsake thee." "In Him we live and move and have our being." "We are His of spring." "It is the Holy Spirit that worketh in you to will and to do of His good pleasure." "He is able to do for you far more exceeding abundantly above all you can ask or think." Jesus said :—"I am come that they might have life." It is the overflowing life that makes people happy. We believe it is the will



55. Miss Papillion founded this Soldiers Institute in Chapel Street (Wilberforce Road) in 1858. The building was devoted to the religious and moral improvement of her Majesty's troops stationed at Shorncliffe Camp. Miss Papillion, a philanthropic lady, died in 1885 at an advanced age. The institute was later enlarged and several rooms added comprising of a library, reading room, mission hall, refreshment room and various small rooms and offices. All soldiers and sailors were welcome without charge and the institute was a great boon to those who would avoid the canteens and public houses. The building has survived and is now called Wilberforce Lodge, at 21 Wilberforce Road.

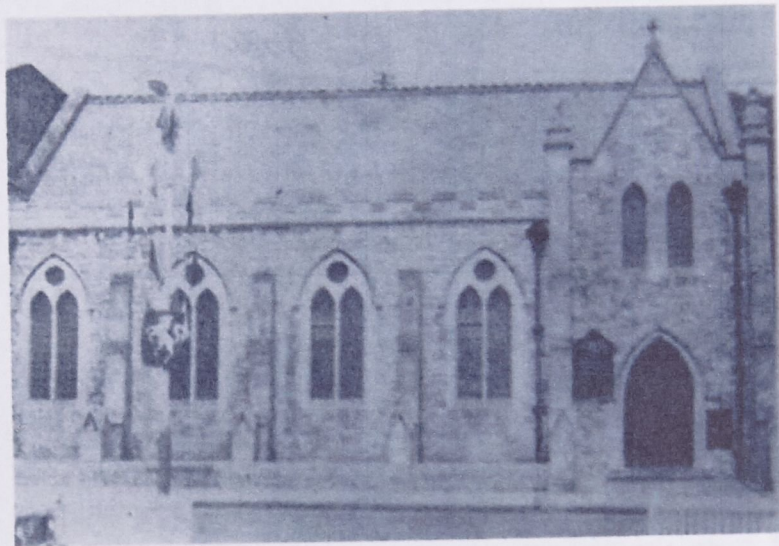


39. This photograph, taken in 1959 by the Folkestone photographer Lambert Weston, shows the site where Pear Tree Cottages stood. The cottages, having been demolished, have left a view of the Wesleyan Church in Gough Road, formerly Mill Lane. A view possibly not seen before and will not be seen again because a complex of flats now occupy the site.

27th June 1964 : Congregational Church, Sandgate, closes

Many of the members left the church during the war, when it was closed after being hit by a flying bomb. It was from this damage that it got its nickname of "The Church with the Leaning Tower". The tower tilted for many years until it became unsafe and had to be demolished.

(Folkestone, Hythe & District Herald)



Cheriton St. Martin



MAJOR RESTORATION PROJECT

Twentieth Century/2000/2001

In 1985 our Architect, Mr Roger Joyce carried out a Quinquennial Inspection and advised the Parochial Church Council that major restoration work was required.

This massive programme of work included seven new roofs of Kent Peg Tiles, external repointing of stonework, internal re-plastering and decorations together with new drainage and rain water goods. An additional buttress was also required to the South Wall of the Chancel.

With the help of Charitable Institutions and Local Fund Raising a Faculty was applied for, and granted in 1996 by the Commissary and work started in March 1996.

Roofs and Drainage

Work started on the 1st March 1996 to the seven roofs and drainage scheme. This work continued until December 1996.

Chancel Buttress and Internal Decorating

From March 1996 to the latter end of 1998 the Chancel was supported with scaffolding until the money had been raised for the additional Buttress. Work started on this part of the project in August 1998 together with the internal re-plastering and decoration, and continued until December 1998.

Stained Glass Windows

In April 1998 work started on restoring the stained glass windows and continued into the New Millennium.

Medieval Stained Glass Panel

The scheme of conservation and protection of this rare panel of medieval glass was conceived as a solution to halt the inevitable deterioration of the glass if left to the rigours of the climate, weather etc. To move the panel into the stable "museum" environment of the church.

Accurate templates were taken of the internal and external apertures of the stonework, and the panel was carefully removed from the stone aperture. A clear glass (rolled sheet) leaded panel following the pattern of the medieval glass was manufactured and fitted into the original glazing groove.

Conservation work included, re-soldering and "strapping" of minor cracks. Careful cleaning with soft bristle brushes of the glass surface carried out to remove any superficial debris and dust, then a manganese brass frame was manufactured and fitted. The medieval panel fitted into the frame retained by a brass "bead". The new fixing method enables the removal of the glass for future inspection, without disturbance to frame or stonework.

This work was carried out in August 2000.

Millennium Window

In July 1999 a window to commemorate the Millennium was commissioned for the Enbrook Chapel. The window was designed by Graham Coffey, and eventually manufactured and installed in 2001 by John Corley our stained glass conservator. The window was dedicated on 18th March 2001 by the Right Reverend Stephen Venner, Bishop of Dover to commemorate the second millennium. This new window was given to the parish by the Friends of St. Martin's Church and members of the community.

Church Floodlighting Trust (Millennium)

St. Martin's was one of the churches chosen by the Trust to receive support in installing floodlighting to the East and West ends of the church at a cost of £6,000. The installation was switched on in November 1999 by the Area Dean for Elham, the Revd. Canon Reg Humphriss, Rector of Saltwood.

Ceramic Wall Tiling ~ Baptistry

In May 1997 and January 1999 work was carried out to restore and polish the ceramic wall tiling in the Baptistry by Maureen Lovering, DipEd, BSc (Hons).

Brockman Monument in Chancel

Cleaning and conservation was carried out in May 1997 by Maureen Lovering, DipED, BSc (Hons).

The Restoration Programme was recorded on behalf of the Parochial Church Council and our Architect by Mr David Smith.

The total cost of the Restoration Work, excluding the Millennium Window and Floodlighting was £271,000.

Grant Aid was received from the following Charities and Institutions

The Marshall Trust	£ 6500
Sir James Colyer Ferguson Charitable Trust	£30000
Shepway District Council	£ 2500
R.F. Brook Charitable Trust	£ 100
English Heritage	£137286
Historic Churches Preservation Trust	£16000
The Wolfson Foundation	£ 3000
The Manifold Trust	£ 1800
Friends of Kent Churches	£ 4000
Tory Family Trust	£ 2250
Garfield Weston Foundation	£ 5000
The Alan Evans Memorial Trust	£ 500
All Churches Trust Limited	£ 150
Saga	£ 385
Jenners	£ 50
Council for Care of Churches	£ 600
V.A.T. Refund	£ 4360
TOTAL	£214481
Local Fundraising & Donations etc	£56519
<hr/>	
GRAND TOTAL	£271000
<hr/>	

The Church Officers at this time were :~

Reverend Canon John Wright, *Rector*
John Francis Hall, *Church Warden*
Anthony Brooke Hazard, *Church Warden*
Parochial Church Council Members, 1996 to 2001

Consultants :~

Church Architect, Roger Joyce Dip.Arch.(Cant).
Roger Joyce Associates
Clive Mercer Associates Ltd (Architects)
for English Heritage
R.J. James and Partners (Consulting Engineers)
P.F.B. Construction Management Services Ltd
Canterbury Archaeological Trust
Jon West Consultants
Diocesan Advisory Committee, Diocesan Registry

Conservation :~

John Corley B.A., *Stained Glass Conservator*
Keith Newing, *Stonemason*
Scott Lovering, *Architectural Conservation*
Graham Coffey, *Stained Glass Designer*

Main Contractors :~

R.J. Barwick & Sons Ltd
Jenner (Contractors) Ltd
Richard Wraight
Ashford Cleaning Contractors
Crispin & Borst

Fundraising events were arranged by :~
The Friends of St. Martin's Church, Cheriton
who are a Registered Charity.