



Fide -
from George Taylor





© Charles Bryant (Sandgate)



7
No. 20.

Beacholme.

Concrete slab behind parapet wall
looking East.



windows into the past...



This picture was taken in about 1914

17 High Street The Sandgate Computer Shop 01303 770538

New Computers
Accessories
Upgrades
Virus Removal
Graphic Design
Business Support

Computer Repairs
All Repairs
£49.99
Or Less
(Plus Parts)
Home Visits
Collections Available

19

SHOPS FOR SALE
100-102 High Street
NORWICH

DOY COFFEE TEA TAKE AWAY OFF 1
N 21 Serena News Agents

PEPSI
SERENA NEWS AGENTS





MELZONE







Tower court 13.2.04



COUNTRY LIFE 20+27 DEC 1924
ENCOMBE ROAD / THEESPLANA DE

942

Reproduction
not permitted
Copyright
Country Life
King's Reach Tower
Stamford Street
London, SE1 8LS
Tel. 01-251-6605

A. H. T. TODD,
BOY HILL,
11, ENCOMBE,
SANDGATE,
FOLKESTONE, KENT
CT20 3ED



1937 CORONATION DECORATIONS



1st Sandgate Company, Church Lads' Brigade.

REV. H. RUSSELL WAKEFIELD, Chaplain.

W. ABERY, Captain.

(First Prize, Band Competition, Tooting, Whit Monday, 1894.)

1894.



HIGH STREET, SANDGATE.

POST CARD.

THIS SPACE, AS WELL AS THE BACK, MAY
NOW BE USED FOR COMMUNICATION.
(Post Office Regulation.)

THE ADDRESS
WRITTEN



Miss Rogers
77 Richmond Road
Bournemouth
Hants

Handwritten text on the back of the card, mostly illegible due to fading and bleed-through. Visible words include: "Miss Rogers", "Richmond Road", "Bournemouth", "Hants", "77", "Miss Rogers", "Richmond Road", "Bournemouth", "Hants", "77", "Miss Rogers", "Richmond Road", "Bournemouth", "Hants", "77".



CARRYING 1 CWT COAL AS A BET
FROM SANDGATE TO SEABROOK.
PASSING KIRBY FREADE.

FINE AT

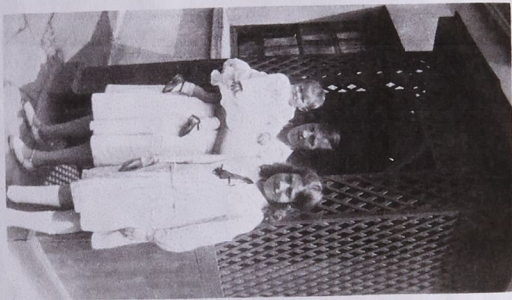
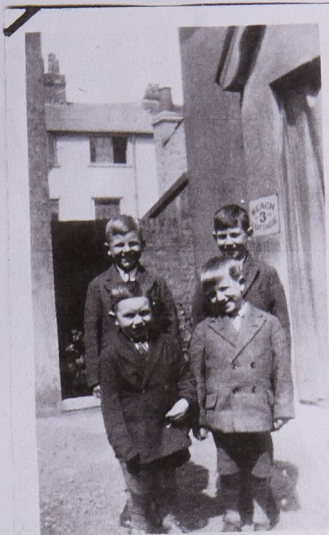
10 132 SANDGATE
HIGH STREET



F. H. Adams

32





THE FOUR FOORD BOYS

BERTIE

JIMMY

FRANK

BILLY

OUTSIDE

3 BEACH COTTES

BERT FOORD
' ALL SMILES'
FOIL
AUNT DOLLY

BERT FOORD
TERRITORIALS
1914

DOLLY EVANS
HOWING DUFF
WITH DORIS HARDY
(JILL'S MUM)

OUTSIDE AUNT KATE'S

1. MARTELLO TERRACE

APPROX 1930











HIGH STREET, WEST END, SANDGATE

L 373



Lithographed by J. Newman, 40, Watling Street, London.

THE EPISCOPAL CHAPEL,
SANDGATE.

Published by the Messrs Parbury, Sandgate.

ENTRANCE
BOXES, CIRCLE & PIT.

ALHAMBRA
MUSIC HALL

SALOO











FILE 71



ON LAMENANCY

A Half Spanish Milk

was carried the Breakfast Cante

ing of

HENRY CLINTON C.

during the Peninsular War

lies under this stone

died April 12, 19

born thirty years of Age

SALAMANCA STONE
NOW IN SHORNECLIFF



17. Facade of the Donkey House, now demolished, where George used to stable the donkey used for pulling up the boat when he had taken the Philipson girls out. Numbers of statues in niches such as the one shown had to be brought in in the Autumn by George, re-painted and put out again in the Spring.



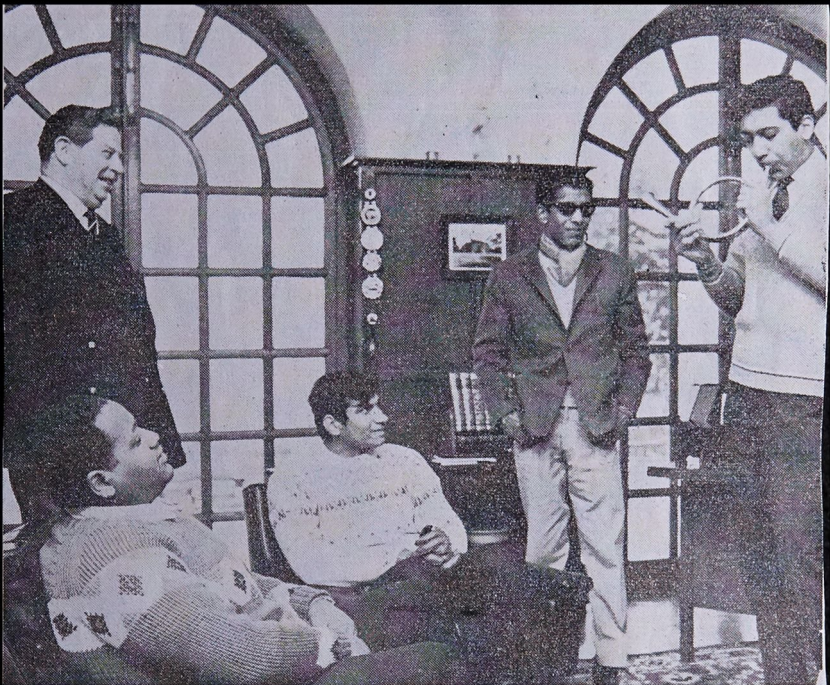
Lane's Broken Green House

ANNIA MARIA LONGLY'S (HT LONGLY'S
WIFE)

BROTHERS GREENHOUSES



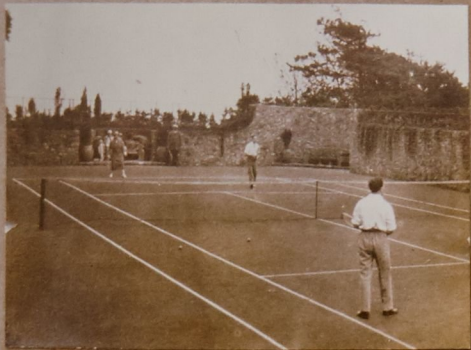




Arab prince Fawaz bin Saud tries out a hunting horn, watched by his three brothers (from left to right) princes Abdul Moteb Bin Abdul bin Saud, Abdul Tajeed bin Saud and Abdul Mohsin bin Saud. The four, sons of King Saud of Saudi Arabia, are studying English at Encombe in Sandgate. Encombe's principal, Colonel D. H. Murphy, is on the extreme left.



14. The Carriage Way up to the House seen from in front of
Note the level meadow, the old "Sheep Pasture", now the
Nos. 4 to 14. The K.C.C. Aerial Survey photograph of 23.6
the Tennis Court behind the trees on the left hand part
meadow.



Playing a game of tennis

15. The Tennis Court looking to the S.E.



HIGH STREET









Enbrook House :



86.16



Churchill and the generals.
Patrick Allen as
General Auchinleck.

Outside Encombe House.

2nd & 3rd May 1979. V. cold. Snow.

B B C
COPYRIGHT

Note handboard patch over fire damaged railing &
blocking of end of loggia.



Enbrook - 1 & 2 Hillside
Lodge

after 1893 landslip clearance



Lamel Cottage Hillside



142 Hillside
previously High Street.

1893 landscape
clearance

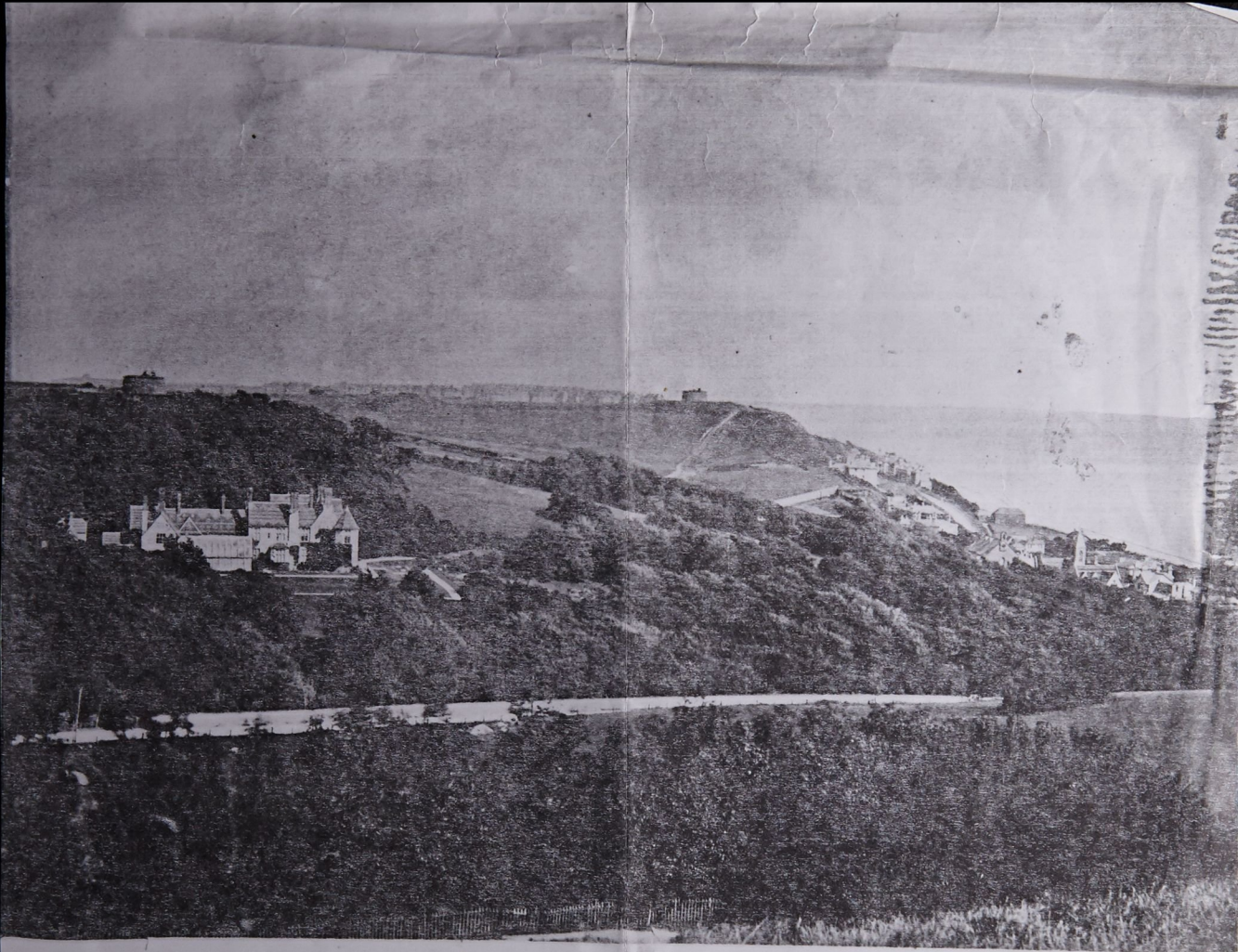
Spring Run
demolished



Bernard Sargeant

Albert House

The Chapel in the Rosary



" View of Folkestone from Shorncliffe Camp, 1878."





Christoff Georgiou
Delicatessen & grocery

See file no. 60 - shops
26 - Georgiou file

TAKEN FROM
'SANDGATE SHOPS ALBUM'







M868 FOLKESTONE & DISTRICT BUS AT SANDGATE c1918

Pamlin Prints, Croydon

