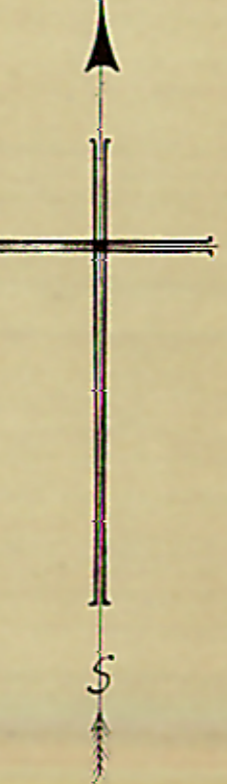
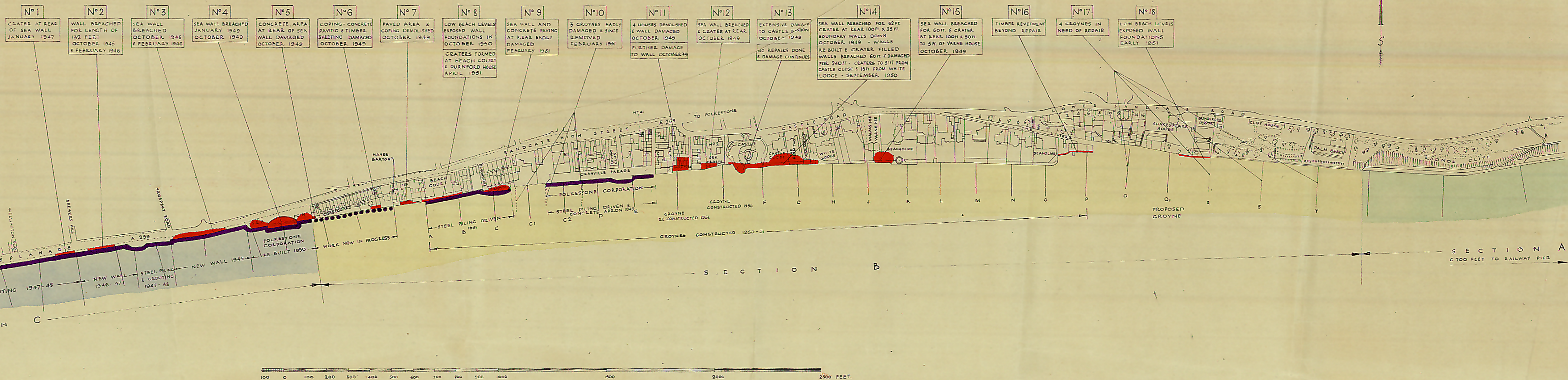


BOROUGH OF FOLKESTONE SANDGATE AND WEST FOLKESTONE SEA DEFENCES

E L A No 1



NEW WORK COMPLETED ————
NEW WORK IN PROGRESS
STORM DAMAGE SINCE 1945 ■■■■■



DRAWING No 619/24

SCALE 1/2500 ORDNANCE

E. L. ALLMAN, A.M.I.C.E.
BOROUGH ENGINEER
FOLKESTONE - AUGUST 1951